

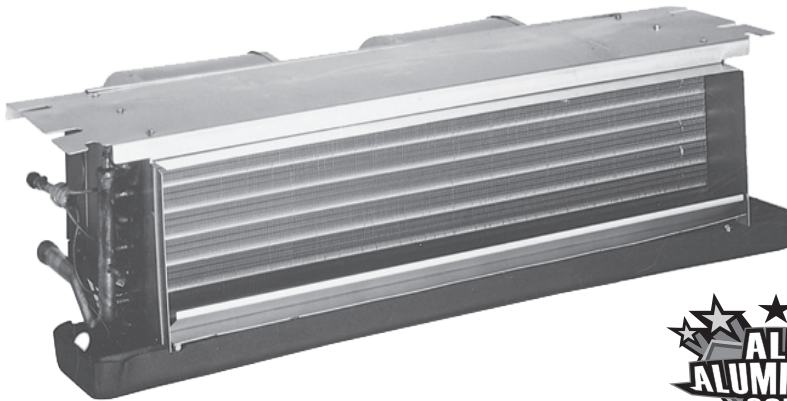


Air Conditioning & Heating

# ACNF SERIES

## CEILING-MOUNT AIR HANDLERS

### 1½ TO 2½ TONS



#### Standard Features

- Suitable for use with refrigerants R-410A and R-22
- Check flowrate for heat pump and cooling-only applications
- All-Aluminum tube/aluminum fin coil
- Direct-drive, resilient-mount, multi-speed motor
- Sequence-controlled and rust-resistant nickel chromium heating elements of 5, 6, 8 and 10 kW
- High-efficiency evaporator coil
- Quiet operation
- Available with and without heat
- AHRI Certified
- ETL Certified

#### Cabinet Features

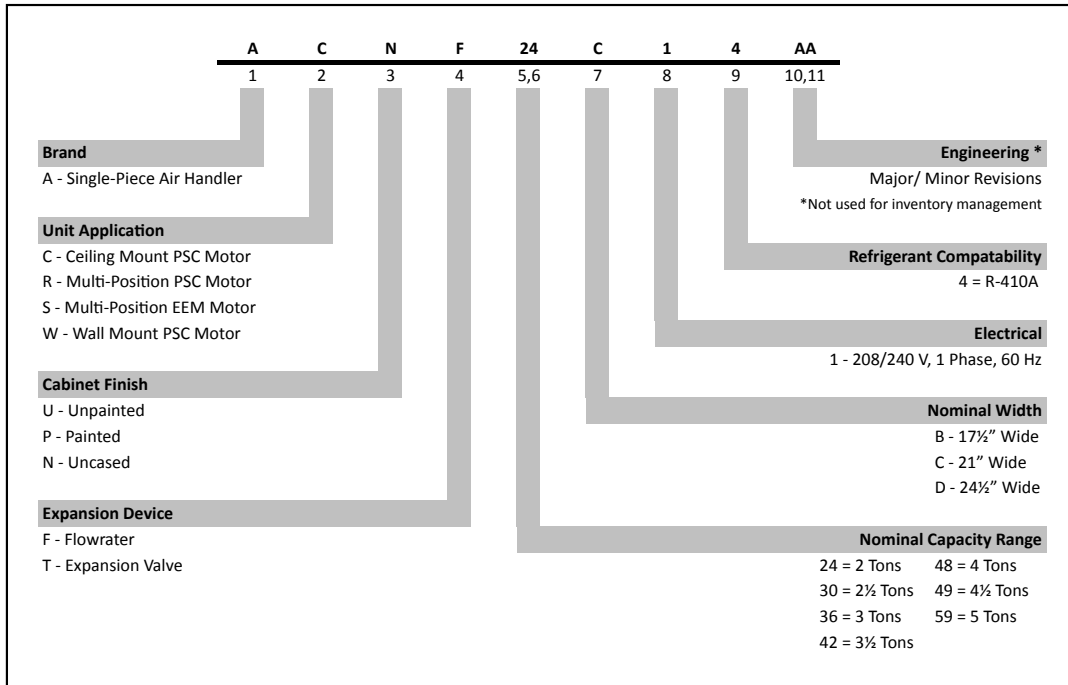
- Primary/secondary drain connection in a high-temperature plastic drain pan
- Suitable for free-return installation (non-ducted return air)
- Galvanized-steel construction
- Factory-installed pull-type disconnect
- Easy service access



Complete warranty details available from your local dealer or at [www.goodmanmfg.com](http://www.goodmanmfg.com). To receive the 10-Year Parts Limited Warranty, online registration must be completed within 60 days of installation. Online registration is not required in California or Québec.



NOMENCLATURE



SPECIFICATIONS

	ACNF18 001	ACNF18 051	ACNF18 061	ACNF18 081	ACNF24 001	ACNF24 051	ACNF24 061
<b>PERFORMANCE RATINGS</b>							
Cooling (BTU/h)	18,000	18,000	18,000	18,000	24,000	24,000	24,000
Airflow Rate CFM (High/ Low) <sup>1</sup>	660/595	660/595	660/595	660/595	880/840	880/840	880/840
Piston Size <sup>2</sup>	0.051	0.051	0.051	0.051	0.057	0.057	0.057
<b>BLOWER</b>							
Diameter	5.75	5.75	5.75	5.75	6.31	6.31	6.31
Width	6.75	6.75	6.75	6.75	8.25	8.25	8.25
Coil Drain Connect FPT	3/4"	3/4"	3/4"	3/4"	3/4"	3/4"	3/4"
<b>BLOWER MOTOR</b>							
FLA	0.72	0.72	0.72	0.72	1.34	1.34	1.34
HP	1/8	1/8	1/8	1/8	1/4	1/4	1/4
<b>REFRIGERANT LINE CONNECTION SIZE</b>							
Liquid	3/8"	3/8"	3/8"	3/8"	3/8"	3/8"	3/8"
Suction	3/4"	3/4"	3/4"	3/4"	3/4"	3/4"	3/4"
<b>ELECTRICAL DATA</b>							
Voltage	208/230	208/230	208/230	208/230	208/230	208/230	208/230
Min Circuit Ampacity @ 230V	0.9	27	33.5	40.6	1.68	27.8	34.3
Min Circuit Ampacity @ 208V	0.9	23.5	29.2	35.3	1.68	24.3	29.9
Max. Overcurrent Device @ 230V	15	30	35	45	15	30	35
Max. Overcurrent Device @ 208V	15	25	30	40	15	25	30
Minimum Voltage VAC	197	197	197	197	197	197	197
Maximum Voltage VAC	253	253	253	253	253	253	253
<b>ELECTRIC HEAT</b>							
kW @ 230 Volts	0.0	4.8	6.0	7.3	0.0	4.8	6.0
BTU/h @ 230 Volts	0	16,400	20,500	24,900	0	16,400	20,500
<b>SHIP WEIGHT (LBS)</b>							
	59	59	59	59	69	69	69

<sup>1</sup> CFM @.3 static

<sup>2</sup> Shipped with Coil

**NOTES**

- For a properly matched system and piston sizing information, refer to Amana piston kit chart of the corresponding Amana® outdoor unit.
- When the room thermostat calls for second stage heat, the first stage (heat pump) operation must be locked out. When matching the "AC" unit that has electric heat with a heat pump, order "HEAT PUMP SHUT OFF KIT HPSK-01." The ACXX-00 units do not require this kit.

**SPECIFICATIONS (CONT.)**

	<b>ACNF24 081</b>	<b>ACNF24 101</b>	<b>ACNF30 001</b>	<b>ACNF30 051</b>	<b>ACNF30 061</b>	<b>ACNF30 081</b>	<b>ACNF30 101</b>
<b>PERFORMANCE RATINGS</b>							
Cooling (BTU/h)	24,000	24,000	30,000	30,000	30,000	30,000	30,000
Airflow Rate CFM (High/ Low) <sup>1</sup>	880/840	880/840	1005/890	1005/890	1005/890	1005/890	1005/890
Piston Size	0.057	0.057	0.061	0.061	0.061	0.061	0.061
<b>BLOWER</b>							
Diameter	6.31	6.31	6.75	6.75	6.75	6.75	6.75
Width	8.25	8.25	8.25	8.25	8.25	8.25	8.25
Coil Drain Connect FPT	3/4"	3/4"	3/4"	3/4"	3/4"	3/4"	3/4"
<b>BLOWER MOTOR</b>							
FLA	1.34	1.34	1.34	1.34	1.34	1.34	1.34
HP	1/4	1/4	1/4	1/4	1/4	1/4	1/4
<b>REFRIGERANT LINE CONNECTION SIZE</b>							
Liquid	3/8"	3/8"	3/8"	3/8"	3/8"	3/8"	3/8"
Suction	3/4"	3/4"	3/4"	3/4"	3/4"	3/4"	3/4"
<b>ELECTRICAL DATA</b>							
Voltage	208/230	208/230	208/230	208/230	208/230	208/230	208/230
Min Circuit Ampacity @ 230V	41.3	54.9	1.68	27.8	34.3	41.3	54.9
Min Circuit Ampacity @ 208V	36.1	47.8	1.68	24.3	29.9	36.1	47.8
Max. Overcurrent Device @ 230V	45	60	15	30	35	45	60
Max. Overcurrent Device @ 208V	40	50	15	25	30	40	50
Minimum Voltage VAC	197	197	197	197	197	197	197
Maximum Voltage VAC	253	253	253	253	253	253	253
<b>ELECTRIC HEAT</b>							
kW @ 230 Volts	7.3	9.8	0.0	4.8	6.0	7.3	9.8
BTU/h @ 230 Volts	24,900	33,500	0	16,400	20,500	24,900	33,500
<b>SHIP WEIGHT (LBS)</b>							
	69	69	79	79	79	79	79

<sup>1</sup> CFM @ .2 static

Note: When the room thermostat calls for second stage heat, the first stage (heat pump) operation must be locked out. When matching the "AC" unit that has electric heat with a heat pump, order "HEAT PUMP SHUT OFF KIT HPSK-01." The ACXX-00 units do not require this kit.

## AIRFLOW DATA

MODEL	MOTOR SPEED	CFM DELIVERED AGAINST EXTERNAL STATIC PRESSURE				
		0.1"	0.2"	0.3"	0.4"	0.5"
ACNF180***	High	710	660	590	515	435
	Low	650	595	540	480	390
ACNF240***	High	955	880	820	740	675
	Low	885	840	775	725	620
ACNF300***	High	1,075	1,005	920	820	730
	Low	945	890	835	760	650

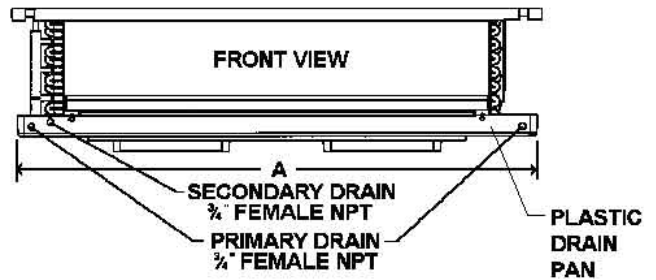
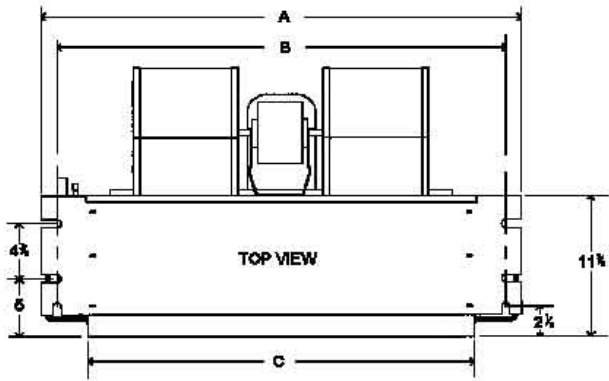
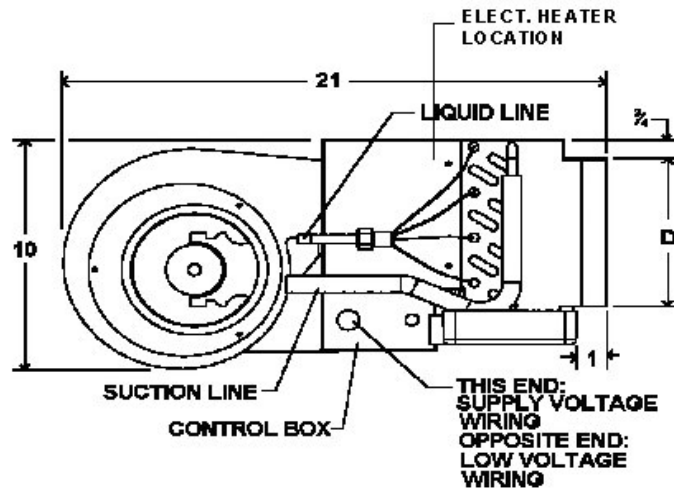
Note: Airflow data for 240 Vac with dry coil and no filter in place.

## HEATING CAPACITY/kW CORRECTION FACTOR

SUPPLY VOLTAGE	240	230	220	210	208
CORRECTION FACTOR	1.08	1.00	0.92	0.84	0.82

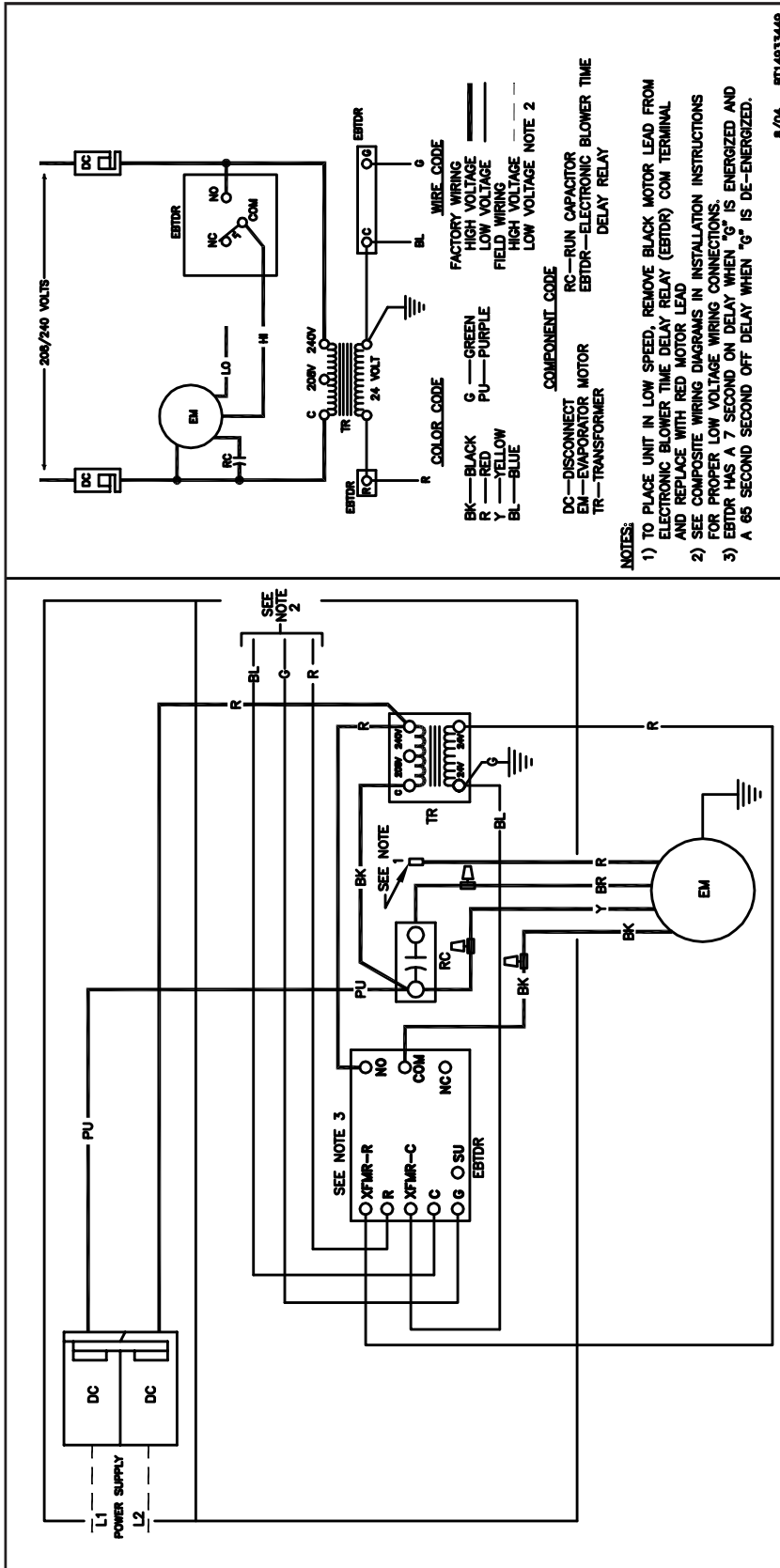
(Multiply the 230-volt capacity by factors)

DIMENSIONS



Model	A	B	C	D
ACNF18	37 1/4"	34 11/16"	30"	6 1/2"
ACNF24	43 3/4"	40 11/16"	36"	6 1/2"
ACNF30	49 3/4"	46 11/16"	42"	6 1/2"

# WIRING DIAGRAM



8/04 BT14933449

**WARNING**

High Voltage: Disconnect all power before servicing or installing this unit. Multiple power sources may be present. Failure to do so may cause property damage, personal injury, or death.

Wiring is subject to change. Always refer to the wiring diagram or the unit for the most up-to-date wiring.

## ACCESSORIES

MODEL	DESCRIPTION
HPSK-01	Heat Pump Shut-off Relay Kit
<b>LOUVERED CEILING ACCESS PANELS</b>	
CAP-1/ 1L	Fits ACNF18
CAP-2/ 2L	Fits ACNF24
CAP-3/ 3L	Fits ACNF30