

Project Name: \_\_\_\_\_  
 Location: \_\_\_\_\_  
 Engineer: \_\_\_\_\_  
 Submitted to: \_\_\_\_\_  
 Submitted by: \_\_\_\_\_  
 Reference: \_\_\_\_\_

Approval: \_\_\_\_\_  
 Date: \_\_\_\_\_  
 Construction: \_\_\_\_\_  
 Unit #: \_\_\_\_\_  
 Drawing #: \_\_\_\_\_

## Performance

*Outdoor Unit Model No:* REYQ72PYDN  
*Type:* Non-Ducted / Ducted  
*Rated Cooling Capacity (Btu/hr):* 72000  
*Nom Cooling Capacity (Btu/hr):* 72000  
*Cooling Input Power (kW):* 5.5  
*SEER:* N/A  
*IEER:* \_\_\_\_\_  
*Rated Heating Capacity (Btu/hr):* 81000  
*Nom Heating Capacity (Btu/hr):* 81000  
*Heating Input Power (kW):* 6.4  
*Heating COP (Btu/hr / Btu/hr):* 4.2/3.8  
*HSPF:* N/A  
*Heating COP 17F (Btu/hr / Btu/hr):* \_\_\_\_\_

*Condensing Unit Type:* 6-Ton VRV-III Heat Recovery  
*Unit Combination:* REYQ72PYDN  
*Rated Cooling Conditions* Indoor: 80°F DB/67°F WB  
 Outdoor: 95°F DB/75°F WB  
*Rated Heating Conditions* Indoor: 70°F DB/60°F WB  
 Outdoor: 47°F DB/43°F WB  
*Rated Piping Length (ft)* 50 / 25  
*Rated Height Difference (ft)* 0

## Condensing Unit Details

*Power Supply (V/Hz/Ph):* 460/60/3ph  
*Power Supply Connections:* L1, L2, L3 Ground  
*Min. Circuit Amps MCA (A):* 16  
*Max. Overcurrent Protection (MOP)(A):* 20  
*Max. Starting Current MSC(A):* 65  
*Rated Load Amps RLA (A):* 2.4+7.0  
*Dimensions Height (Inch):* 66-1/8  
*Dimensions Width (Inch):* 51-3/16  
*Dimensions Depth (Inch):* 30-1/8  
*Net Weight (lbs):* 732

*Compressor Type:* Inverter  
*Capacity Control Range (%):* 20 - 100  
*Capacity Index Limit:* 36 - 93.5 (130%)  
*Airflow Rate (CFM):* 6700  
*Gas Pipe Connection (inch):* 3/4  
*Liquid Pipe Connection (inch):* 3/8  
*H/L Pressure Connection (inch):* 5/8  
*H/L Equalizing Connection (inch):* \_\_\_\_\_  
*Sound Pressure Level (dBA):* 58  
*Sound Power Level (dBA):* \_\_\_\_\_  
*Max. No. of Indoor Units:* 12

## System Details

*Refrigerant Type:* R-410A  
*Holding Refrigerant Charge (lbs):* 22.7  
*Additional Charge (lbs/ft):* install data  
*Pre-charge Piping (Length ft):* -  
*Max. Pipe Length (Total ft):* 540 ft  
*Max. Pipe Length (Vertical ft):* 164 ft (295 ft) / 295 ft  
*Max Height Separation (Ind to Ind ft):* 49 ft

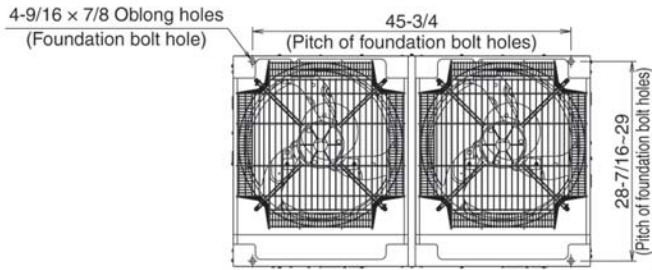
*Cooling Operation Range (°F):* 23 - 122  
*Cooling Range w/Baffle (°F):* \_\_\_\_\_  
*Heating Operation Range (°F):* 0 - 77 / (-4) - 60  
*Heating Range w/Baffle (°F):* \_\_\_\_\_

Project Name: \_\_\_\_\_  
 Location: \_\_\_\_\_  
 Engineer: \_\_\_\_\_  
 Submitted to: \_\_\_\_\_  
 Submitted by: \_\_\_\_\_  
 Reference: \_\_\_\_\_

Approval: \_\_\_\_\_  
 Date: \_\_\_\_\_  
 Construction: \_\_\_\_\_  
 Unit #: \_\_\_\_\_  
 Drawing #: \_\_\_\_\_

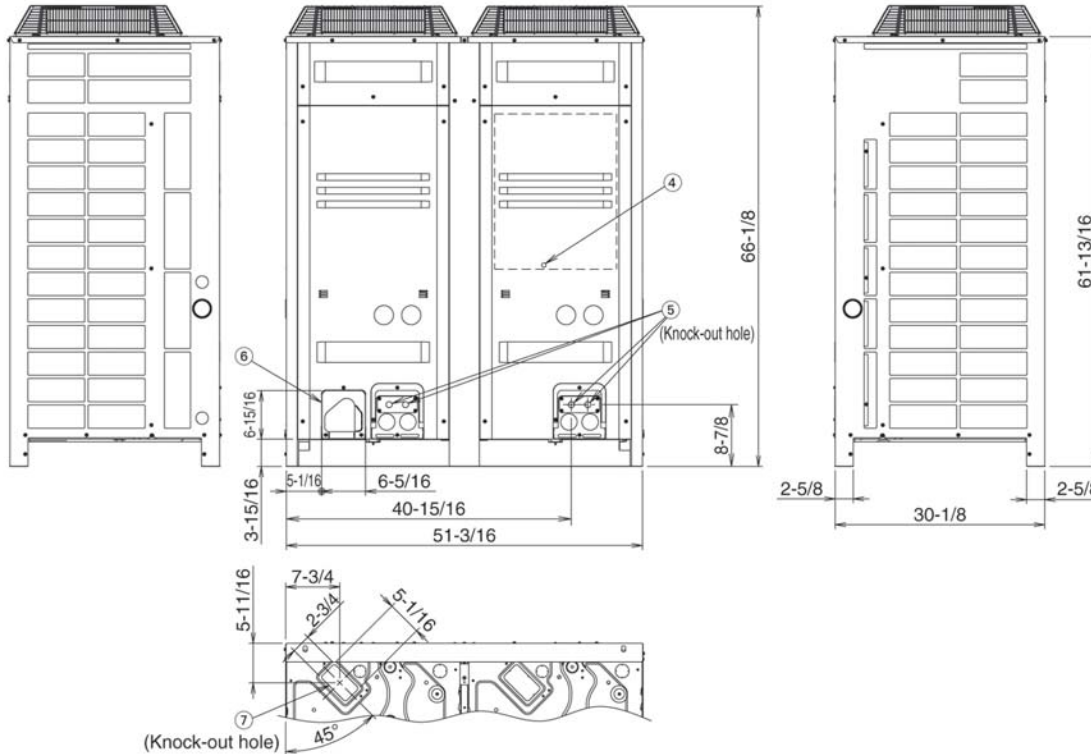
## Dimensional Drawing - Condensing Unit

REYQ72PYDN



Notes)

- For piping connection method (front and bottom sides), see the installation manual.
  - High and low pressure gas pipe
    - φ 5/8 Brazing connection...REYQ72P
    - φ 3/4 Brazing connection...REYQ96, 120P
    - φ 7/8 Brazing connection...REYQ144PT
  - Gas pipe
    - φ 1-1/8 Brazing connection...RXYQ72PT
  - Suction gas pipe
    - φ 3/4 Brazing connection...REYQ72P
    - φ 7/8 Brazing connection...REYQ96P
    - φ 1-1/8 Brazing connection...REYQ120, 144PT
  - Liquid pipe
    - φ 3/8 Brazing connection...REYQ72, 96P
    - φ 1/2 Brazing connection...REYQ120, 144PT, RXYQ144PT
3. \*shows the dimensions after fixing the accessory pipes.



Project Name: \_\_\_\_\_  
Location: \_\_\_\_\_  
Engineer: \_\_\_\_\_  
Submitted to: \_\_\_\_\_  
Submitted by: \_\_\_\_\_  
Reference: \_\_\_\_\_

Approval: \_\_\_\_\_  
Date: \_\_\_\_\_  
Construction: \_\_\_\_\_  
Unit #: \_\_\_\_\_  
Drawing #: \_\_\_\_\_

**REYQ72PYDN**



**REYQ72PYDN**

Std U.S. Warranty: 7yrs Compressor, 1yrs Parts