

Project Name: \_\_\_\_\_  
 Location: \_\_\_\_\_  
 Engineer: \_\_\_\_\_  
 Submitted to: \_\_\_\_\_  
 Submitted by: \_\_\_\_\_  
 Reference: \_\_\_\_\_

Approval: \_\_\_\_\_  
 Date: \_\_\_\_\_  
 Construction: \_\_\_\_\_  
 Unit #: \_\_\_\_\_  
 Drawing #: \_\_\_\_\_

### Performance

*Indoor Unit Model No:* FXAQ09PVJU  
*Rated Cooling Capacity (Btu/hr):* 9500  
*Sensible Capacity (Btu/hr):* 7300  
*Cooling Input Power (kW):* 0.028  
*Rated Heating Capacity (Btu/hr):* 10500  
*Heating Input Power (kW):* 0.034

*Indoor Unit Type:* Wall Mounted  
*Rated Cooling Conditions* Indoor: 80°F DB/67°F WB  
 Ambient: 95°F DB/75°F WB  
*Rated Heating Conditions* Indoor: 70°F DB/60°F WB  
 Ambient: 47°F DB/43°F WB  
*Rated Piping Length (ft)* 25  
*Rated Height Separation (ft)* 0

### Indoor Unit Details

*Power Supply (V/Hz/Ph):* 208-230/60/1ph  
*Power Supply Connections:* L1, L2, Ground  
*Min. Circuit Amps MCA (A):* 0.4  
*Max. Overcurrent Protection (MOP) (A):* 15  
*Dimensions (HxWxD):* 11-3/8x31-1/4x9-1/4  
*Panel (HxWxD):* N/A  
*Net Weight (lbs):* 26  
*Net Weight with Panel (lbs):* \_\_\_\_\_

*Airflow Rate (CFM wet coil)* 280//175  
*Moisture Removal (pt/h):* \_\_\_\_\_  
*Gas Pipe Connection (inch):* 1/2  
*Liquid Pipe Connection (inch):* 1/4  
*Condensate Connection (inch):* 11/16  
*Sound Pressure Level (dBA):* 37  
*Sound Power Level (dBA):* \_\_\_\_\_  
*External Static Pressure/Max (inWg):* 0 / 0  
*Controller Name:* \_\_\_\_\_

### FXAQ09PVJU



### FXAQ09PVJU

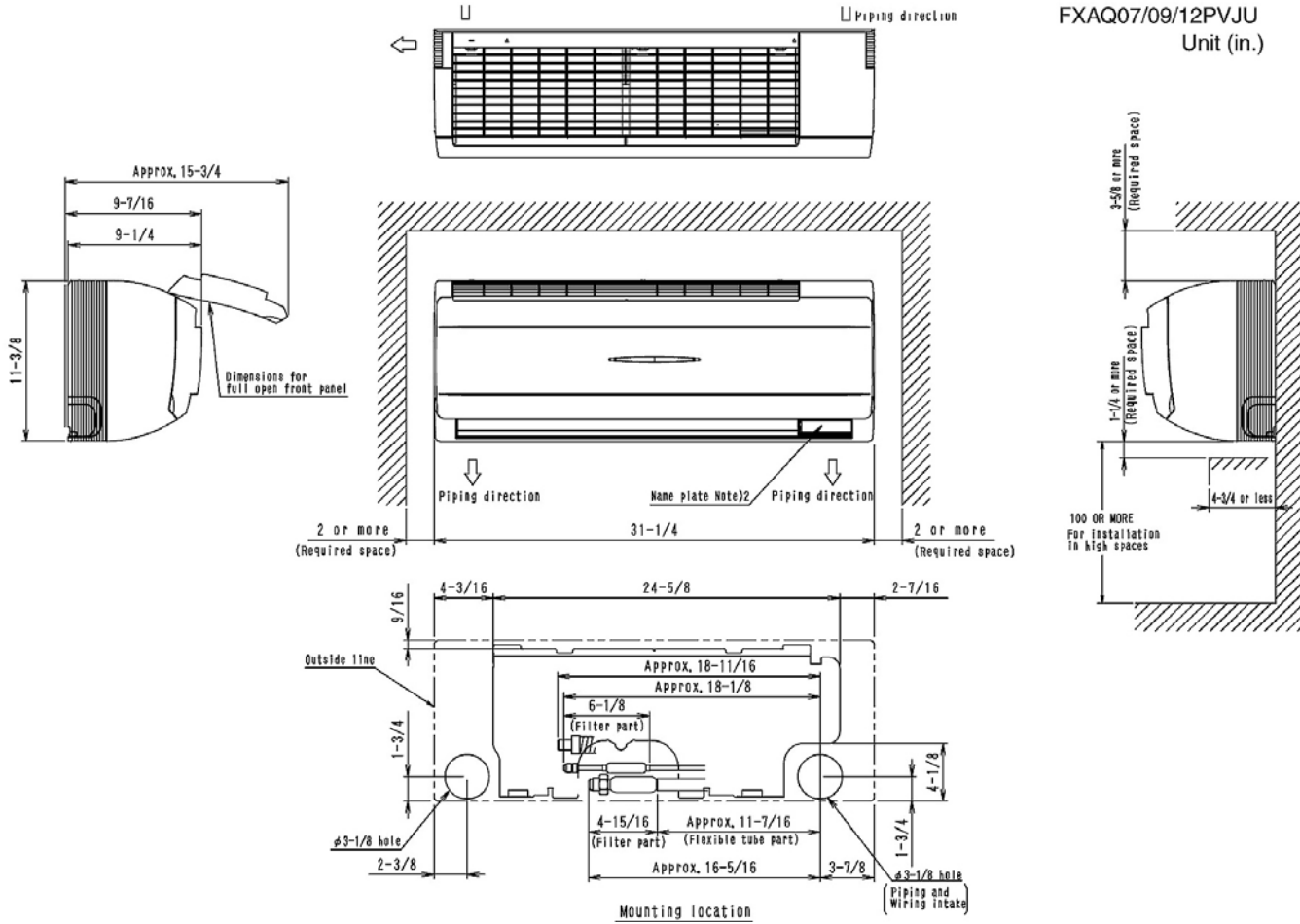
Std U.S. Warranty: 7yrs Compressor, 1yrs Parts

Project Name: \_\_\_\_\_  
 Location: \_\_\_\_\_  
 Engineer: \_\_\_\_\_  
 Submitted to: \_\_\_\_\_  
 Submitted by: \_\_\_\_\_  
 Reference: \_\_\_\_\_

Approval: \_\_\_\_\_  
 Date: \_\_\_\_\_  
 Construction: \_\_\_\_\_  
 Unit #: \_\_\_\_\_  
 Drawing #: \_\_\_\_\_

**Dimensional Drawing - Indoor Unit**

FXAQ09PVJU



FXAQ07/09/12PVJU  
Unit (in.)